

D

C

B

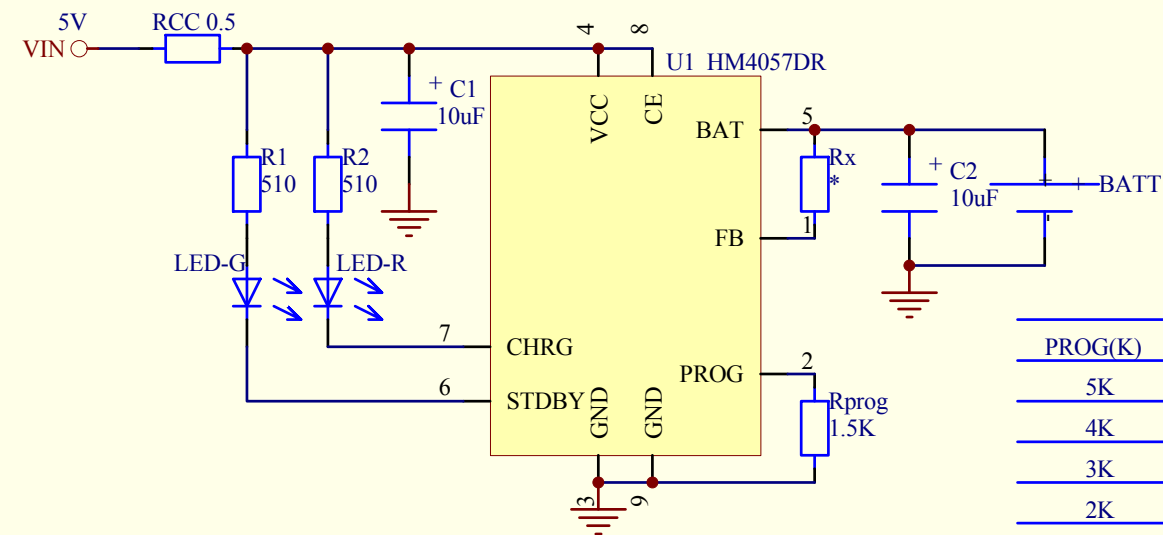
A

D

C

B

A



充电电流设置:ICH(mA)=1150/Rprog(K)
满电电压微调:VBAT=0.025*RX(K)+4.2V,RX每增大1K,VBAT上升25mV

PROG(K)	ICH(mA)
5K	230mA
4K	287mA
3K	383mA
2K	575mA
1.66K	690mA
1.5K	766mA
1.33K	865mA

Title		
Size A4	Number	Revision
Date:	11-Oct-2019	Sheet of
File:	G:\张春峰\做DEMO\DEMO.ddb	Drawn By: