

• FEATURES

* On-chip Multiple Charging Standard Identifications:

USB Power Delivery 3.0 Fix PDO

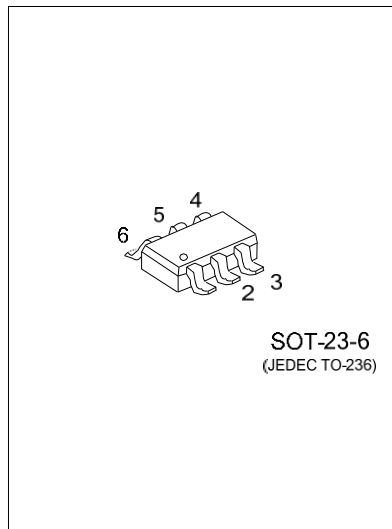
(support 18W/20W/25W configurations)

USB Power Delivery 2.0 Fix PDO

USB Type C CC-logic

* 8kV HBM and 400V MM contact ESD Level

* -40°C ~ +125°C Operating Temperature



• APPLICATION

* Wall Adapter

* Car Charger

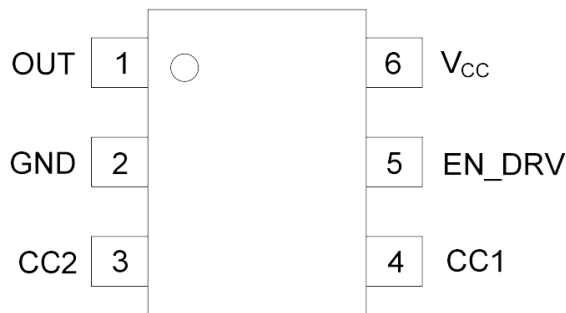
* Portable Power Bank

* USB Power Plugs

• ORDERING INFORMATION

Ordering Number	Package	Packing
HM6602T	SOT-23-6	Tape Reel

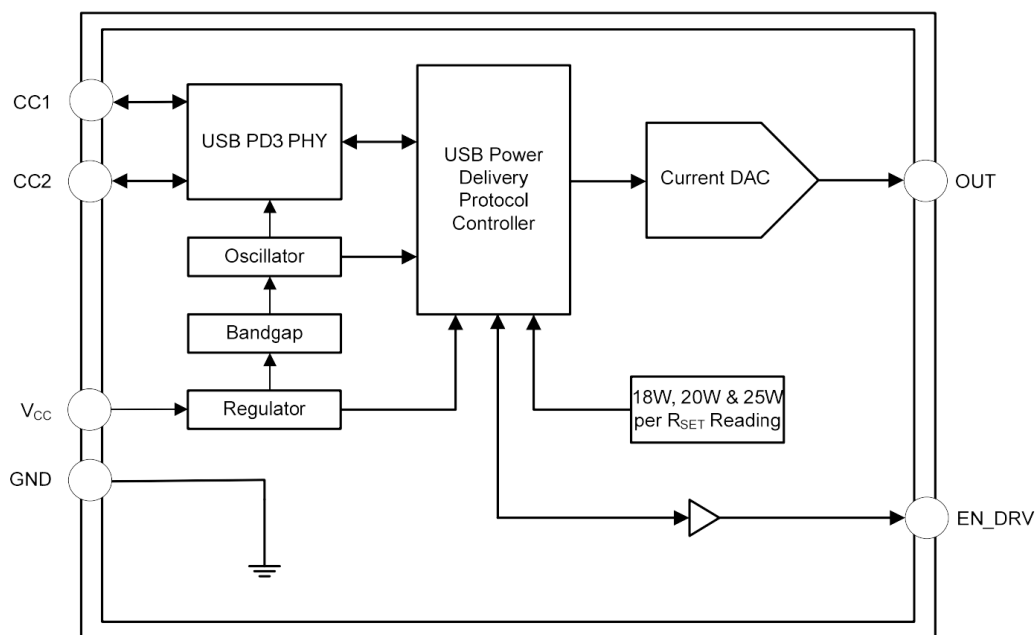
• **PIN CONFIGURATION**



• **PIN DESCRIPTION**

PIN NO.	PIN NAME	DESCRIPTION
1	OUT	Feedback output
2	GND	Ground
3	CC2	USB Type-C Configuration channel signal2
4	CC1	USB Type-C Configuration channel signal1
5	EN_DRV	Muti-PDO configuration: Tight GND: 18W (5V/3A, 9V/2A, 12V/1.5A) 160k RSET Pull Low: 25W(5V3A, 9V/2.77A) 390k RSET Pull Low: 20W(5V/3A, 9V/2.22A, 12V/1.67A) 620k RSET Pull Low: 20W(5V/3A, 9V/2.22A) Open : 18W(5V/2.4A, 9V/2A)
6	V _{CC}	Supply input voltage pin

• **LOCK DIAGRAM**



• **ABSOLUTE MAXIMUM RATING** ($T_A=25^{\circ}\text{C}$, unless otherwise specified)

PARAMETER	SYMBOL	RATINGS	UNIT
Supply Current	VCC	6.5	V
Other Pins	FB, EN_DRV CC1, CC2	6.5	V
Operation Temperature Range	TOPR	-40 ~ +150	$^{\circ}\text{C}$
Storage Temperature	TSTG	-60 ~ +150	$^{\circ}\text{C}$

Note: Absolute maximum ratings are those values beyond which the device could be permanently damaged. Absolute maximum ratings are stress ratings only and functional device operation is not implied.

• **RECOMMENDED OPERATING CONDITIONS** ($T_A=25^{\circ}\text{C}$, unless otherwise specified)

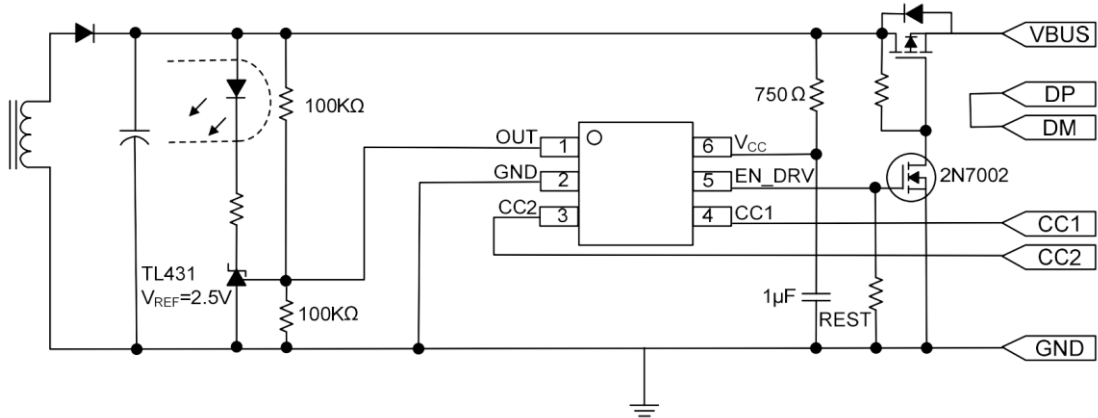
PARAMETER	SYMBOL	RATINGS	UNIT
Supply Voltage	V_{CC}	3.3 ~ 5.6	V
Feedback Output	FB	0 ~ 3.3	V
Other Pins	EN_DRV CC1, CC2	0 ~ V_{CC}	V
Operation Temperature	T_A	-40 ~ +125	$^{\circ}\text{C}$
Operation Current		< 1	mA

• **ELECTRICAL CHARACTERISTICS** ($V_{DD}=5\text{V}$, $T_A=25^{\circ}\text{C}$, unless otherwise specified)

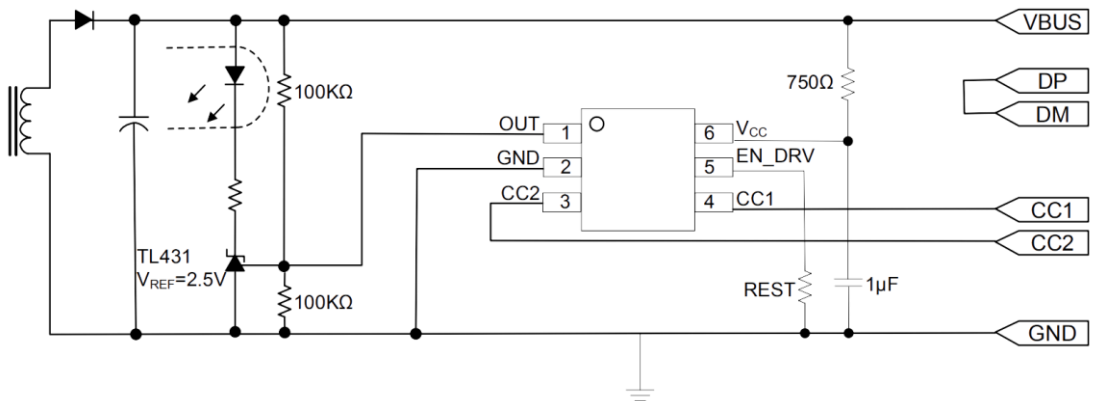
PARAMETER	SYMBOL	TEST CONDITIONS	MIN	TYP	MAX	UNIT
SUPPLY INPUT						
Supply Voltage Range	V_{CC}		3.3		5.6	V
Input UVLO Threshold	V_{UVLO}	V_{CC} Rising.		2.9		V
Input UVLO Hysteresis	$V_{UVLO(HYS)}$	V_{CC} Falling.		0.2		V
V_{CC} Supply Current	I_{CC}	$V_{CC}=5.0\text{V}$		1.0		mA
V_{CC} Clamp Voltage	V_{CC}	$I_{CC}=3.0\text{mA}$		5.8		V

• TYPICAL APPLICATION CIRCUIT

Wall charger with VBUS Load Switch



Wall charger without VBUS Load Switch



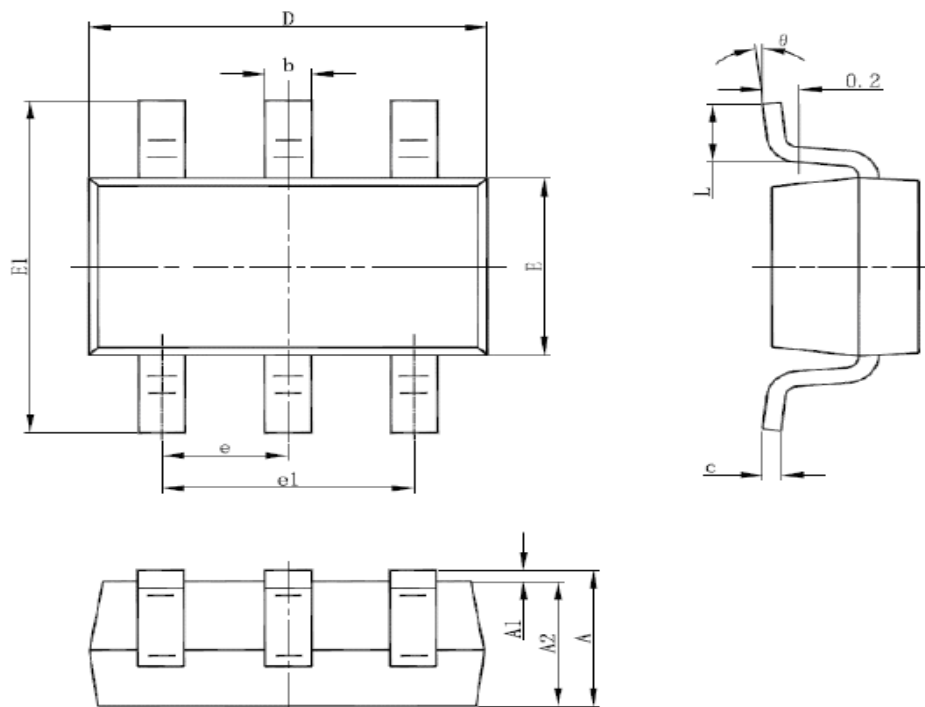
PDO Configuration

The PDO configuration is configured by external pull-down resistor attached on Pin5.

Table 1.

RSET	PDO CONFIGURATION
0R	18W (5V3A, 9V2A, 12V1.5A)
160K	25W (5V3A, 9V2.77A)
390K	20W (5V3A, 9V2.22A, 12V1.67A)
620K	20W (5V3A, 9V2.22A)
OPEN	18W (5V2.4A, 9V2A)

封装尺寸: SOT23-6



符号	毫米		英寸	
	最小值	最大值	最小值	最大值
A	1.000	1.300	0.039	0.051
A1	0.000	0.150	0.000	0.006
A2	1.000	1.200	0.039	0.047
b	0.300	0.500	0.012	0.020
c	0.100	0.200	0.004	0.008
D	2.800	3.020	0.110	0.119
E	1.500	1.700	0.059	0.067
E1	2.600	3.000	0.102	0.118
e	0.950 (BSC)		0.037 (BSC)	
e1	1.800	2.000	0.071	0.079
L	0.300	0.600	0.012	0.024
θ	0°	8°	0°	8°